



**CANDRIAM**

# Positive and negative approaches

---

A guide to sustainable  
investing

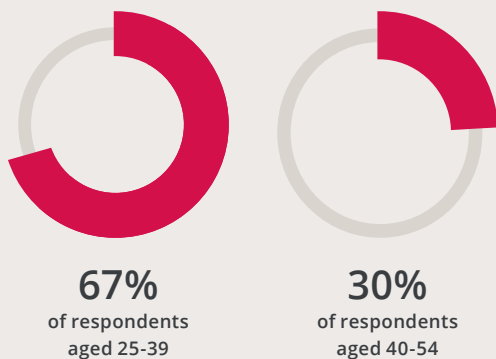
# Strong growth

## — in sustainable investing offerings

In recent years, “sustainable investing”—meaning investment strategies that incorporate non-financial environmental, social, and governance (“ESG”) factors alongside traditional financial analysis—has grown considerably in attention and assets under management (AUM). According to a 2018 study, more than \$12 trillion in assets in the U.S. alone were managed in a sustainable process, compared to \$639 billion in 1995<sup>1</sup>.

As you would expect with that level of asset growth, there’s been a significant increase in the number of sustainable investment strategies offered as well. At the end of 2018, Morningstar estimated that there were more than 350 mutual funds and exchange-traded funds (ETFs) managed following a sustainable process<sup>2</sup> in the USA. This total—which includes equity, fixed income, and alternative funds—reflects a growth of almost 50% from the prior year.

Based on a 2019 study performed by New York Life Investments ...



... stated having an extremely high interest in discussing sustainable investment strategies with their financial advisor in the future.<sup>3</sup>

1. Source: *The Forum for Sustainable and Responsible Investment (US SIF), "Trends Report 2018."*
2. Source: *Morningstar, "Sustainable Funds U.S. Landscape Report," February 2019.*
3. Source: *New York Life Investments and RTi Research, September 2019. Results based on survey questions asked of 450 investors, both men and women, with investable assets over \$250k, ranging in age between 25 through 55+.*



# Two primary approaches

## to sustainable investing

Sustainable investing comes in many “flavors,” and the industry has introduced several terms that may be confusing. At its heart, sustainable investing involves looking at the investment universe from either an exclusive or inclusive perspective. An exclusive, or negative, approach seeks to avoid certain investments in an investor’s portfolio that do not meet certain criteria. Investment performance is often not the main objective of this approach. Rather, investors generally want to avoid investing in companies that do not align with their values or ethics.

An inclusive, or positive, approach seeks to use ESG factors throughout the investment process in an attempt to add alpha. Investment managers following a positive approach purchase certain stocks or bonds they believe will outperform at least in part due to

a company’s positive ESG practices. The same managers will analyze ESG factors to avoid the stocks and bonds of certain companies with poor ESG profiles. In both cases, managers are using ESG factors to seek to improve investment performance—by either buying the “best” securities or by avoiding the “worst” securities within an investment universe.

This “positive versus negative” dichotomy somewhat oversimplifies the varied landscape of sustainable investing but does provide a helpful way to navigate the broad number of sustainable investments available to you. Below in Figure 1, we’ll explore the nuances of these two approaches in more detail.

***“At its heart, sustainable investing involves looking at the investment universe from either an exclusive or inclusive perspective.”***

**Figure 1:**  
Positive and Negative: The Two Primary Approaches

Approach	Industry Terms	Definition	Primary Purpose	Example
<b>Negative</b>	Socially responsible investing, ethical investing, values-based investing	Excluding certain industries, sectors, or companies in an investment portfolio	Aligning investments with an investor’s values and worldview	Eliminating tobacco or alcohol companies from a portfolio
<b>Positive</b>	ESG integration, “green” investing, impact investing	Using ESG factors to find the best opportunities in an investment universe	Seeking to create value through “best-in-class” ESG investments	Investing in companies with the best ESG scores/profiles

# Negative screening — aligning investments with values

The original “sustainable” investments date back to at least the 18th century, when the Methodists and Quakers in the USA refused to invest in companies involved in the slave trade. In modern investing, a number of religious organizations, charities, university endowments, and pension plans have adopted exclusionary approaches to manage all or part of their investment portfolios. This approach often involves negative screening, which eliminates investments that do not meet certain criteria—whether due to ethical reasons or poor ESG profiles—from an investment portfolio. Excluding stocks or bonds of specific companies or industries allows investors to align their investments with their values. In many cases, investors exclude securities from companies in “controversial” industries, such as tobacco, alcohol, gambling, pornography, and firearms, among others. Religious organizations may also exclude companies that produce contraceptives or other medical devices that do not meet their ethical guidelines. In addition, negative screens can eliminate the “worst” (according to the fund manager) companies in certain sectors, such as companies with poor human rights records or bad environmental practices.

Negative screening does not necessarily mean totally avoiding certain sectors. In some cases, there may be “materiality thresholds” to determine if an investment will be excluded. For instance, if a diversified company generates 10% of its revenues from alcohol sales, that company may be included in the investment universe, even as a company that generates 100% of its revenue from alcohol would be excluded from a portfolio.<sup>4</sup>

### DIVESTMENT — COMPLETELY ELIMINATING INDUSTRY OR COUNTRY EXPOSURE

In some cases, investors choose to “divest,” or completely exclude, certain securities from their portfolios, again usually to better align their portfolios with their values. For instance, the California Public Employees’ Retirement System (CalPERS)—one of the largest and most influential institutional investors, with assets under management of more than \$345 billion in 2019—has divested from a number of industries and countries over the years. In 2002, CalPERS decided to exclude tobacco companies from its portfolio, in part because smoking could lead to higher healthcare costs for its members.<sup>5</sup> CalPERS has also divested from entire countries as well—for example, excluding companies that do business in places like Iran and Sudan.

While certain divestments have detracted from CalPERS’ investment performance—particularly its avoidance of tobacco stocks—other divestments have added value. That said, CalPERS’ decision to divest was about more than investment performance. Divestment allows CalPERS to use its vast investment portfolio to influence the broader world and to discourage investments in regimes with poor human rights records and other poor ESG practices. While CalPERS is one of the highest-profile asset owners to exclude entire industries or countries, numerous other charities, endowments, and other organizations also use divestment to align their investment with their values.

Negative screens tend to exclude the following types of companies and industries: **tobacco, alcohol, weapons/defense, pornography, gambling**

4. Source: For more information on this topic, please see EIRIS Foundation, “Responsible Investment in Pooled Funds: A guide for charity trustees,” February 2013.

5. Source: Chief Investment Officer, article “CalPERS Decision to Divest from Tobacco is Costly,” 12/12/18.



## # 2 POSITIVE APPROACH

# Seeking alpha through ESG

---

The other major approach to sustainable investing focuses on using ESG factors to find the “best” investment opportunities rather than simply avoiding certain sectors or industries. This approach—which has grown significantly in recent years—integrates ESG in the investment process in a number of ways and generally looks to ESG factors as an added source of value. This often means using external and/or internal ESG ratings throughout the investment process. Before diving into the positive approach, it’s helpful to understand how investment managers access information on individual companies’ ESG profiles through ratings.

***“Investment managers can actively evaluate prospective securities from a sustainability/ ESG perspective using “objective” ratings to gain more insight into companies during the investment process.”***

### FINDING OPPORTUNITIES USING ESG RATINGS

As interest in sustainable investing has grown, several companies have created ESG ratings to help investment managers invest sustainably. Morningstar has launched “Sustainability Ratings,” which provide scores of 1 to 5 for mutual funds and exchange-traded funds (ETFs) using company-level ESG ratings.<sup>6</sup> Index provider MSCI also ranks companies by ESG score, and uses ratings from AAA (the highest rating) to CCC (the lowest rating).<sup>7</sup> These are two of the major sustainability/ESG ratings, though there are a number of others as well. The takeaway is that investment managers can actively evaluate prospective securities from a sustainability/ ESG perspective using “objective” ratings to gain more insight into companies during the investment process.

In many cases, investment managers seek companies with the highest ESG scores when creating a universe of potential stocks or bonds to include in their portfolio. In this way, managers can select the “best-in-class” securities they believe will outperform. They have both academic and market history support for that belief. A 2015 academic report that analyzed more than 2,000 other studies found that companies with good ESG ratings outperform over time.<sup>8</sup> The authors state that managers should gain “a detailed and profound understanding of how to integrate ESG criteria into investment processes in order to harvest the full potential of value-enhancing ESG factors.” In addition, Morningstar noted that sustainable funds outperformed their overall universe for four years in a row from 2015 to 2018.<sup>9</sup> The track record of sustainable funds undercuts the notion that investors need to sacrifice performance to invest in ESG- focused funds.

6. Source: Morningstar, “Helping Investors Evaluate the Sustainability of Portfolios,” November 2017.

7. Source: MSCI ESG Ratings Methodology, 2018.

8. Source: Gunnar Friede, Timo Busch, and Alexander Bassen: ESG and financial performance — aggregated evidence from more than 2000 empirical studies, *Journal of Sustainable Finance & Investment*, 5:4, 210-233, 2015.

9. Source: Morningstar, “Sustainable Funds U.S. Landscape Report,” February 2019.

# Create value

## by avoiding “bad” securities

Managers may use ESG ratings to avoid companies that may appear attractive using standard financial metrics, but which lag in terms of their ESG scores. Active managers can add value by avoiding stocks or bonds with heightened risks that may be evident in their ESG scores. For instance, perceptive fund managers integrating ESG into their analysis could have seen red flags in companies that otherwise may have seemed like strong investment candidates.

Figure 2 shows three examples of companies with high-profile accidents or scandals. In each of these cases, the company's ESG rating was downgraded prior to the negative event. While accidents and other scandals are bound to happen in the future, these examples demonstrate that managers who integrate ESG into their investment processes may have an advantage versus managers who rely solely on financial metrics in their decision-making.

**Figure 2:**

Three Examples Where Lowered ESG Ratings Anticipated Problems<sup>10</sup>

Company	ESG Factor	Description of ESG Issue	ESG Rating Downgrade?	Outcome
<b>British Petroleum (BP)</b>	Environmental ("E")	Deepwater Horizon explosion/oil spill in 2010 led to worst-ever environmental disaster in the Gulf of Mexico	<b>Yes;</b> two years before accident	BP has spent \$40 billion+ on cleanup and penalties so far; credit rating downgrade; stock has underperformed rivals
<b>Equifax</b>	Social ("S")	Data security breach announced in September 2017; breach exposed the private information of 145.5 million consumers	<b>Yes;</b> MSCI downgraded Equifax to its lowest ESG rating in August 2016 and removed the stock from MSCI ESG indices in November 2016	\$575 million fine from the Federal Trade Commission (FTC), with potential to reach \$700 million; ongoing reputational damage
<b>Wells Fargo</b>	Governance ("G")	Fraudulent activity by employee activity led to 1.5 million fraudulent accounts being opened, affecting nearly three million people	<b>Yes;</b> MSCI downgraded Wells Fargo in November 2015 due to the high number of customer complaints; subsequent downgrade to its lowest rating in 2016 following sales scandal	\$185 million fine from the Consumer Financial Protection Bureau; class action lawsuit; resignation of CEO

*The stocks included in this document are mentioned only for information purposes only. This document does not constitute investment research within the meaning of Article 36(1) of Commission Regulation (EU) No 2017/565.*

10. Sources: Bob Monks, "It's plain for all to see, ESG research works," *Financial Times*, 10/20/12; MSCI, "ESG Ratings May Help Identify Warning Signs," 2018.



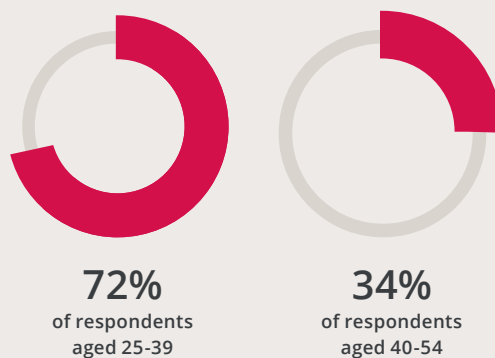


# The next generation of sustainable investing

While positive approaches to sustainable investing have gained assets and attention, negative approaches clearly have a place as well. Certain types of investors will always look to avoid holding investments that go against their values, so negative screens and “responsible” approaches will almost definitely continue to exist in the future. The widespread adoption of the Principles for Responsible Investing (PRI) by both asset owners and investment managers also indicates that positive approaches that include ESG consideration and integration will also continue to grow. As evidence, PRI signatories represented close to \$90 trillion (with a “T”) of assets under management as of the end of 2018<sup>11</sup>.

Looking forward, it’s likely that investors will want to take sustainable investing even further by actively seeking to use their investments to influence the world in a beneficial manner. The rise of “impact investments”—which seek to directly align an investor’s financial investments with broader goals, such as protecting the environment and helping to fight poverty—have grown to represent more than \$500 billion in assets.<sup>12</sup> Along with impact investments, numerous thematic ESG investments—such as strategies that invest in companies that produce renewable energy—also have emerged as investment options. The universe is expected to grow, with client interest in sustainable investing likely to keep increasing as well.

Based on a 2019 study performed by New York Life Investments ...



...stated they were willing to sacrifice some return to ensure their investments reflected personal social views.<sup>13</sup>

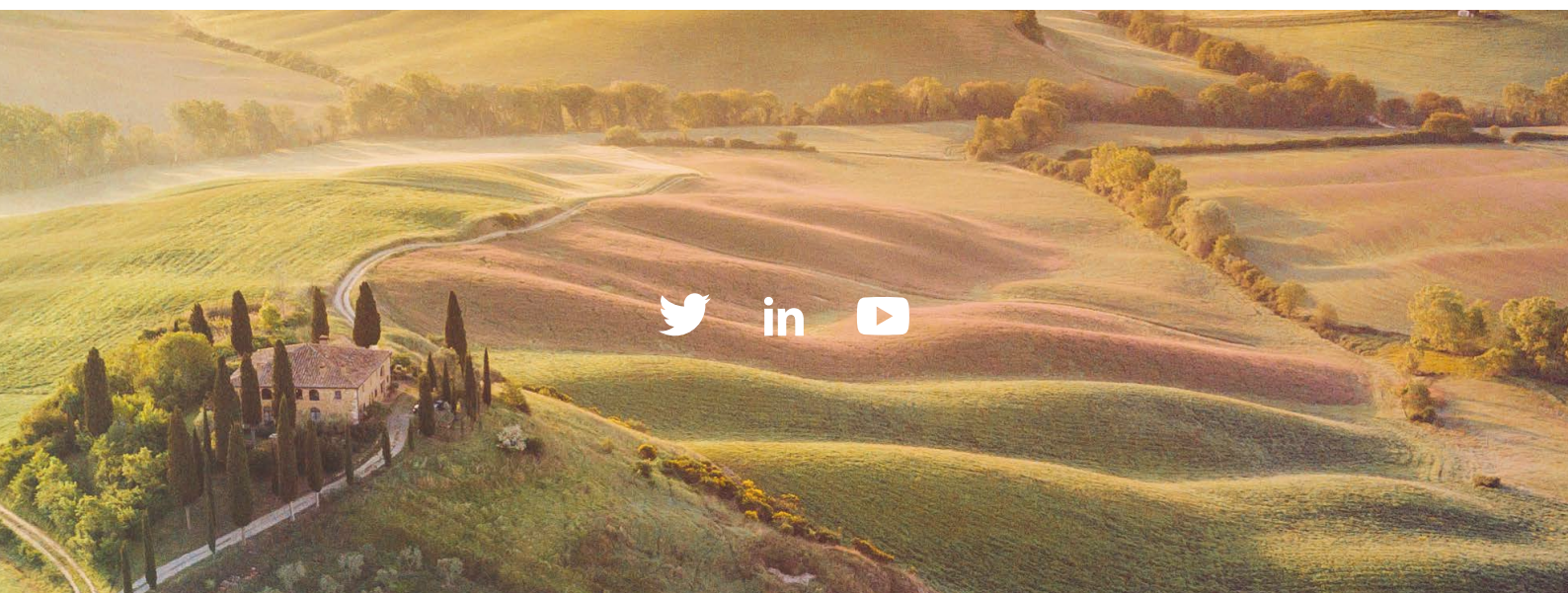
11. Source: Principles for Responsible Investing, “Annual Report 2018.”

12. Source: Global Impact Investing Network, “Sizing the Impact Investing Market,” April 2019.

13. Source: New York Life Investments and RTi Research, September 2019. Results based on survey questions asked of 450 investors, both men and women, with investable assets over \$250k, ranging in age between 25 through 55+.

**ABOUT RISK** All investments are subject to market risk, including possible loss of principal. Diversification cannot assure a profit or protect against a loss in a declining market.

**DEFINITIONS** **Alternative investments** are speculative, not suitable for all clients, and intended for experienced and sophisticated investors who are willing to bear the high economic risks of the investment. **Commodities** markets are subject to greater volatility than investments in traditional securities, such as stocks and bonds. **Fixed-income securities** are subject to credit risk – the possibility that the issuer of a security will be unable to make interest payments and/or repay the principal on its debt—and interest rate risk—changes in the value of a fixed-income security resulting from changes in interest rates. **Bonds** are subject to credit risk, in which the bond issuer may fail to pay interest and principal in a timely manner.



The information contained in this document may contain Candriam's opinion and proprietary information. The opinions, analysis and views expressed in this document are provided for information purposes only, it does not constitute an offer to buy or sell financial instruments, nor does it represent an investment recommendation or confirm any kind of transaction. Although Candriam selects carefully the data and sources within this document, errors or omissions cannot be excluded a priori. Candriam cannot be held liable for any direct or indirect losses as a result of the use of this document. The intellectual property rights of Candriam must be respected at all times, contents of this document may not be reproduced without prior written approval.

**Warning:** Past performances of a given financial instrument or index or an investment service or strategy, or simulations of past performances, or forecasts of future performances are not reliable indicators of future performances. Gross performances may be impacted by commissions, fees and other expenses. Performances expressed in a currency other than that of the investor's country of residence are subject to exchange rate fluctuations, with a negative or positive impact on gains. If the present document refers to a specific tax treatment, such information depends on the individual situation of each investor and may change.

The present document does not constitute investment research as defined by Article 36, paragraph 1 of the Commission delegated regulation (EU) 2017/565. Candriam stresses that this information has not been prepared in compliance with the legal provisions promoting independent investment research, and that it is not subject to any restriction prohibiting the execution of transactions prior to the dissemination of investment research.

**CANDRIAM. INVESTING FOR TOMORROW.**  
[www.candriam.be](http://www.candriam.be)